

# **Shot-Online Beginners Guide**

## 1. Logging In:

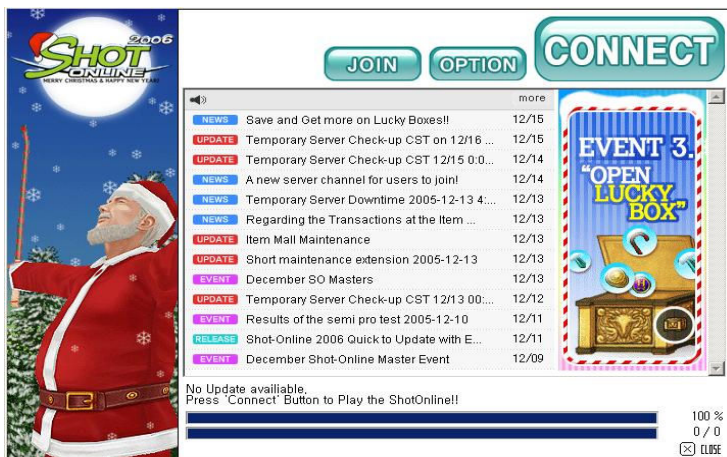
When the installation is complete, a golf ball shaped icon is created on the desktop and in the start menu.

Please click the icon to start Shot-Online.

(1)

After the latest version is updated automatically, a window for connecting to Shot-Online will open.

Click any button you want.



(2)

## Check the options

Before connecting to the game, click the "option" button and check the proper options for your current system specifications.



## Options Explained:

Shading : Shading effects on objects within the world

Shadow : Shadows casted by objects or players

LightMap : Lighting on objects and players

Texture : Quality of textures used on objects and players

Screen : The screen mode ( Full screen or Windowed mode )

Resolution : The size of the screen during windowed play

Cursor : Hardware or Software cursor

EnvMap : Environment mapping on reflective surfaces.

(3)

**After setting the options, click "Connect"**

On the next screen, Please use your created ID and password to log in.



(4)

**After logging in**

Please select the server name and channel you wish to join.



## 2. Character Creation and Starting the game

(1)

Create a character of your choice and enter a desired name.



(2)

If you wish to add more characters, you may do so by clicking the “Add” button located at the bottom of your screen.



(3)

You may have up to 3 characters on your account at once.

Once you have selected your character, either click the **Square** button or the **Round List** button to join the game.





### 3. World Map

Use the world map, located in the top right of your screen whilst in the square, to navigate around the square.



### 4. Meet the NPC characters

#### **NPC Freya**

NPC Freya sells Gloves, Balls and shoes.

#### **NPC Fricka**

NPC Fricka sells Clothing and new hair styles to customize your character with.

#### **NPC Salvador**

NPC Salvador sells Clubs to help improve your game as your level rises.

#### **NPC Meriel**

NPC Meriel sells drinks which you can use to reduce your fatigue level.

#### **Anthony Bestra**

Anthony Bestra deals with all guilds related requests. Including the registration of new guilds and the application to join a guild.

#### **NPC Thor**

NPC Thor deals with all requests regarding current qualification tests. Including The Semi-Pro qualifying test, The Tour Pro qualifying test and so on.

#### **NPC Baxter**

NPC Baxter deals with current events which are running within shot-online. Check the web page for details on current events.

#### **NPC Potter**

NPC Potter deals with your storage area called a Locker Room. He also functions as the place you will receive your Item Mall bought Items into. Visit Potter to receive your items you purchased from the item mall.

## NPCs Calix and Belita

These NPCs both function as your cart rental managers. (Currently not implemented )

## NPC Ceridwen

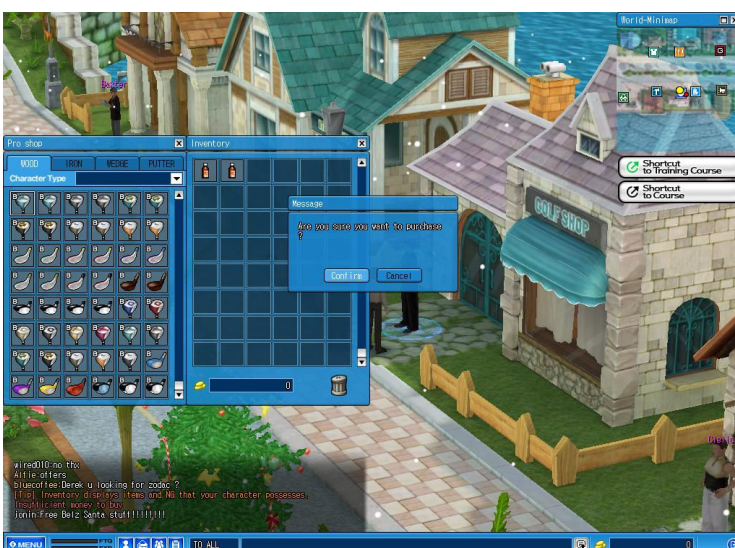
NPC Ceridwen deals with the tutorial and practice courses for both beginner and experienced players.

## 5. Item Exchange

When you first start the game you will be given a free set of basic golf clubs to use. However you may purchase new clubs using the in-game currency called NG from NPC Salvador. You can earn NG by playing well during the game or during your training period through the training courses.

To Purchase an item from a vendor: Simply click on the item from within the vendor menu and click the subsequent confirm button

To sell an item to a vendor: Left click the item from your inventory and drag it into the vendor window. Then click the subsequent confirm button.

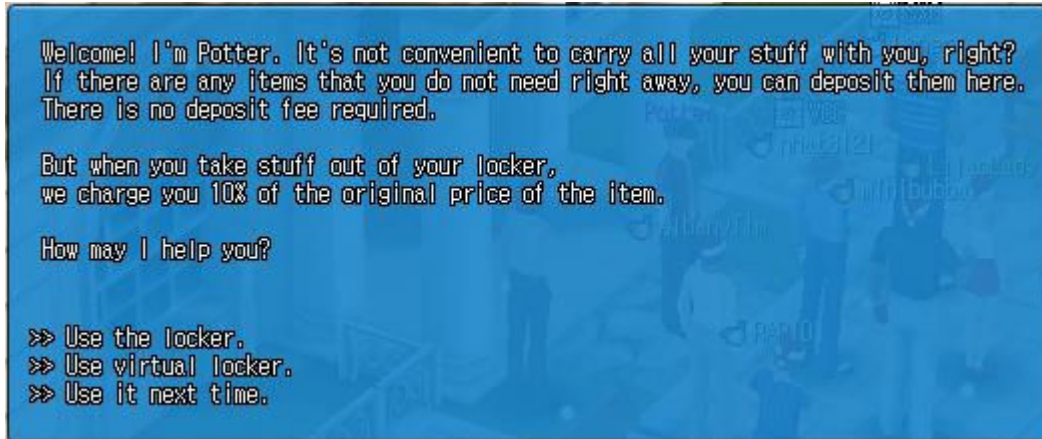


## 6. Using the depository

(1)

### Finding Potter

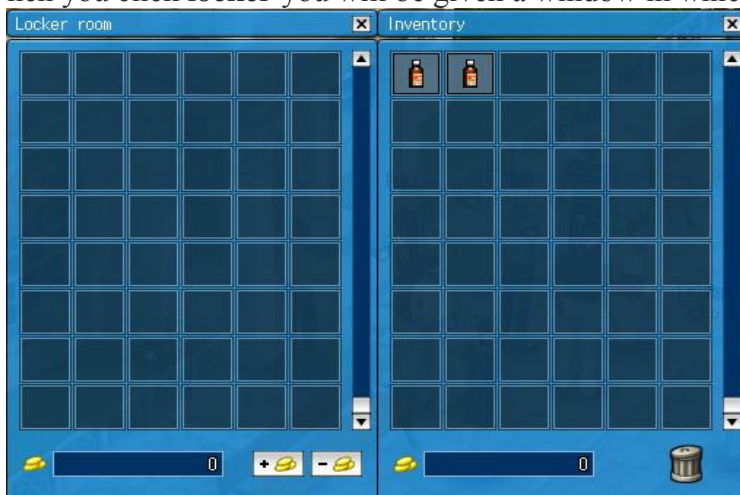
Find Potter using your mini-map and click him,  
A list of options will be displayed.



(2)

### Deposit Item

When you click **locker** you will be given a window in which you can store your items

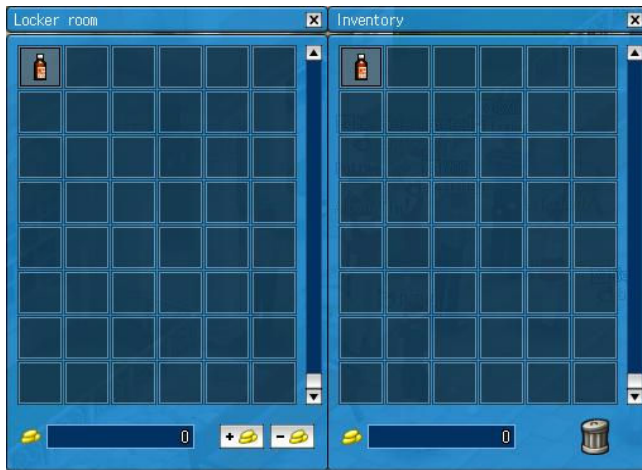


(3)

### Deposit or withdraw items

To deposit an item simply drag it into the locker. To deposit NG, click the + or - button after selecting an amount.

To withdraw an item, drag and drop it out of your locker and into your inventory. There may be a fee for using the locker.



## 7. Training Center

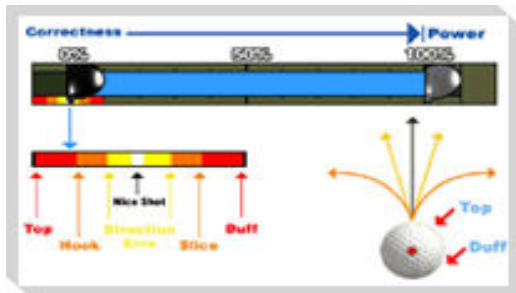
(1)

### The Swing Control Bar

When you click the ball with the left button of your mouse, the swing bar starts to move.

Three clicks are needed; to swing, to adjust the power, and to adjust the accuracy.

However, for putting, only two clicks are needed; to start putting, and to adjust the power.



(2)

### Moving around in the Training Center

Use your right mouse button and move the mouse to change camera angles. Use your left mouse button or keyboard arrow keys to change shot direction. Use your TAB key to view the ball's projected landing zone. Once you have your shot lined up and you feel confident, click the ball to begin the shot process. Try to hit 100% and 0% perfectly for a "good shot" bonus!



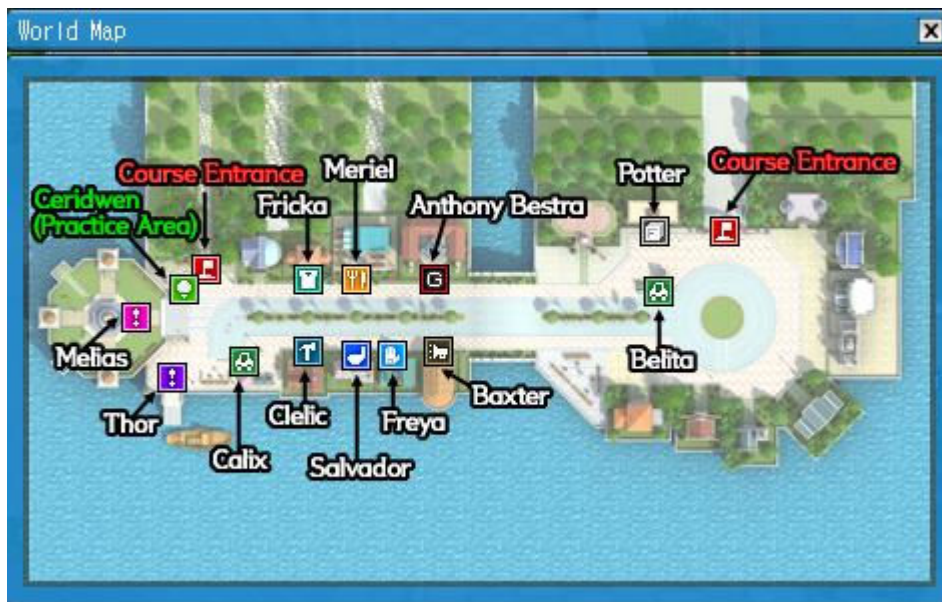


(3)  
Exit

To exit the training center, click the X in the bottom right hand corner and Select **Square** or **Round** list.

## 8. The Field

(1)  
Portals



The course entrances (seen in red) are located to the East and West of the map. The training NPC Ceridwen, is located next to the West course entrance.

(2)

### The Room List

After entering one of the portals, You will be presented with the room list in which you can join a game, Create a game or observe a game in Gallery Mode.

Options in the Room List:

**1. Create a room?**

Create your own room and start a game

**2. Open Room List?**

Show only the open rooms with space for you to join

**3. Join a Game?**

You can Join a game by clicking this button next to the listed game.

**4. Enter the Game room by Room Number?**

You can enter a room by the number of the room.

**5. Joining randomly?**

You can enter a waiting room randomly.

**6. Waiting players list?**

It is a list for players waiting in the list.

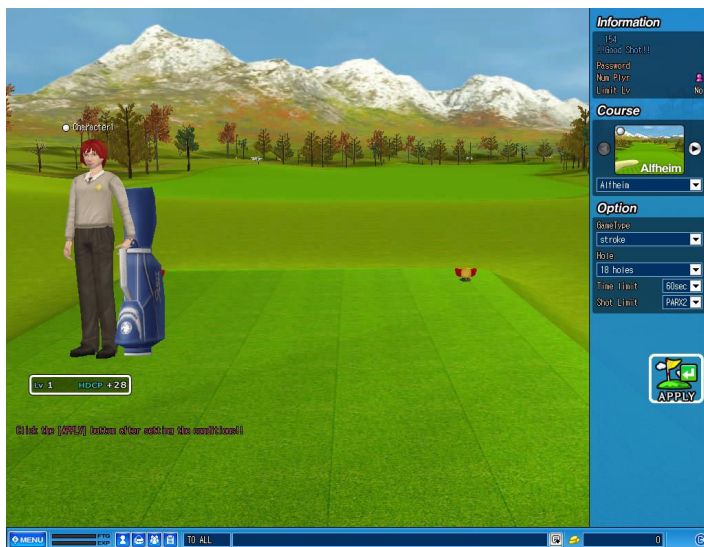
(3)

### The Waiting Room

You can enter a room and observe the waiting users.

The user who created the room can set up the game options.

The game starts when the room creator clicks the “Start” button after all the players click their “ready” buttons.



(4)

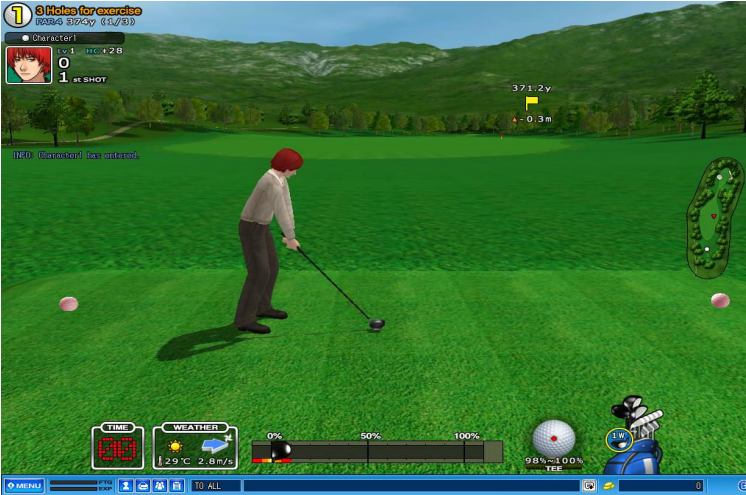
### The Field Screen

Swinging in a field is the same as swinging in the Training Center.

You can change the clubs by clicking the club icon next to the ball.

You can see the predicted ball dropping spot location using your TAB key.

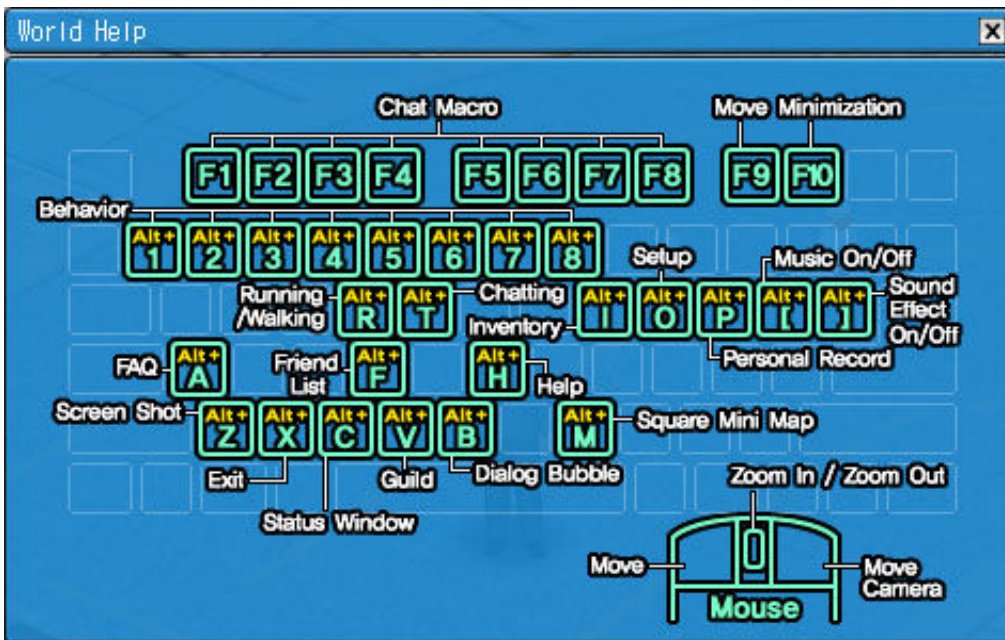
When deciding the power of the swing surface conditions, weather and wind should be considered.



## 9. Control Key List

(1)

### World Help



(2)

## Field Help

